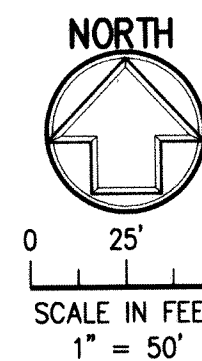


PALM BEACH TAX COLLECTOR, A PUD

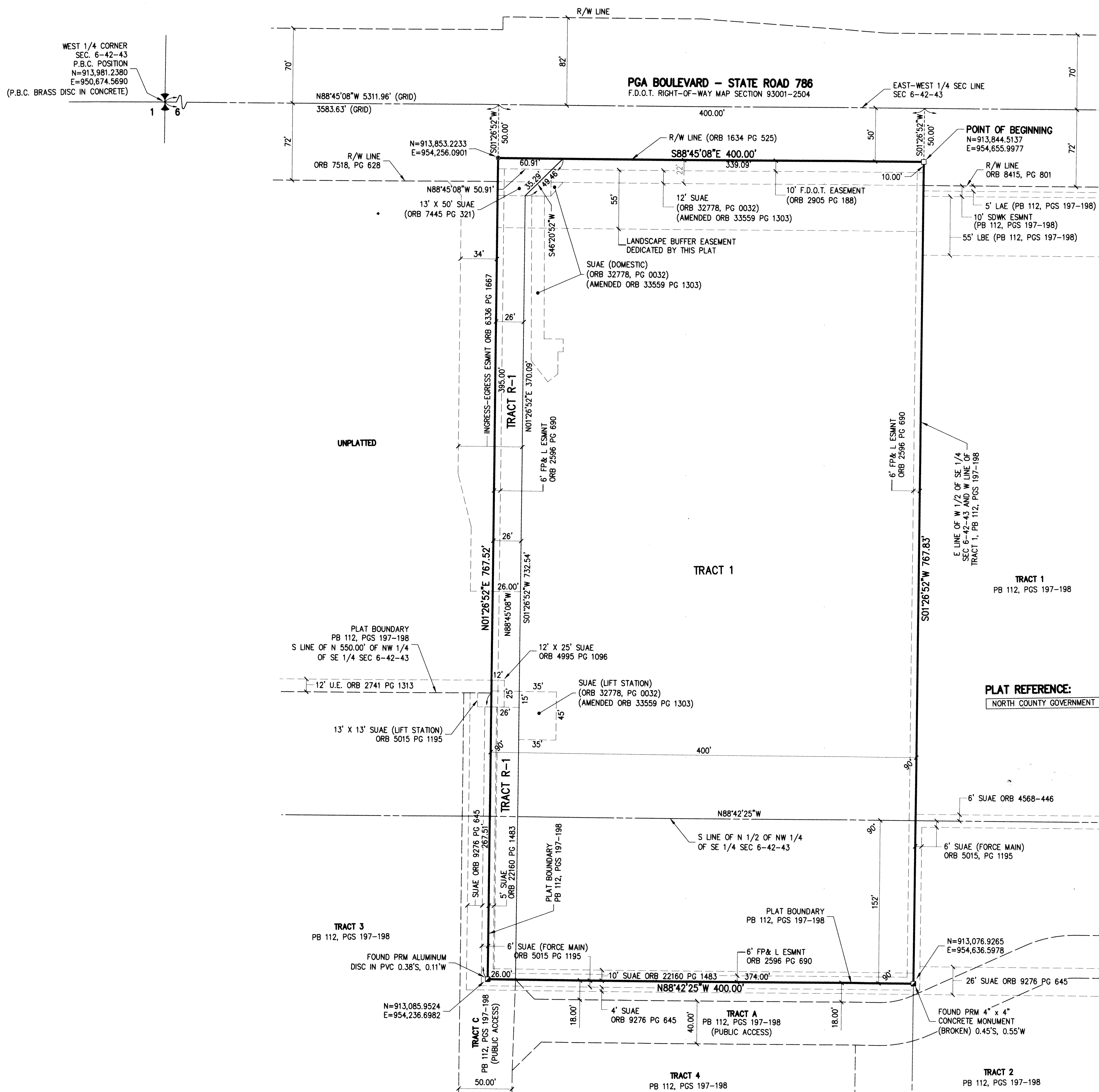
A SUBDIVISION IN SECTION 6, TOWNSHIP 42 SOUTH, RANGE 43 EAST, CITY OF PALM BEACH GARDENS,
PALM BEACH COUNTY, FLORIDA



174

WEST 1/4 CORNER
SEC. 6-42-43
P.B.C. POSITION
N=913,981.2380
E=950,674.5690
(P.B.C. BRASS DISC IN CONCRETE)

POINT OF COMMENCEMENT
EAST 1/4 CORNER
SEC. 6-42-43
P.B.C. POSITION
N=913,865.5750
E=955,985.2690
FOUND MAG NAIL AND F.D.O.T DISC
0.12' N. & 0.08' W.



ABBREVIATIONS:

- N= NORTHING
- E= EASTING
- ESMNT EASEMENT
- F.D.O.T. FLORIDA DEPARTMENT OF TRANSPORTATION
- FP& L FLORIDA POWER AND LIGHT
- LAE LIMITED ACCESS EASEMENT
- LBE LANDSCAPE BUFFER EASEMENT
- ORB OFFICIAL RECORDS BOOK
- PB PLAT BOOK
- P.B.C. PALM BEACH COUNTY
- PG PAGE
- PGS PAGES
- PUD PLANNED UNIT DEVELOPMENT
- R/W RIGHT-OF-WAY
- SDWK SIDEWALK
- SEC SECTION
- SUAE SEACOAST UTILITY AUTHORITY EASEMENT
- U.E. UTILITY EASEMENT

STATE PLANE COORDINATE DATA

SCALE FACTOR: 1.0000432
PROJECTION: TRANSVERSE MERCATOR
ZONE: FLORIDA EAST ZONE
DATUM: NORTH AMERICAN DATUM OF 1983 (1990 ADJUSTMENT)

ALL DISTANCES ARE GROUND DISTANCES UNLESS OTHERWISE SHOWN.

GROUND DISTANCE X SCALE FACTOR = GRID DISTANCE
LINEAR UNITS = US SURVEY FEET

PLAT REFERENCE:

NORTH COUNTY GOVERNMENT CENTER PLAT PB 112, PGS 197-198

MONUMENT LEGEND:

- (SET 4" X 4" CONCRETE MONUMENT LB6603 PRM)
- ⊙ (SET MAG NAIL AND DISC LB6603 PRM)
- FOUND PRM

THIS INSTRUMENT WAS PREPARED BY: JOHN J. RICE, P.S.M. IN THE OFFICE OF
ENGINEUTY GROUP, INC. CERTIFICATE OF AUTHORIZATION NO. LB6603 1280 N.
CONGRESS AVE, SUITE 101 WEST PALM BEACH, FLORIDA 33409



1201 BELVEDERE ROAD, WEST PALM BEACH, FLORIDA 33405
PH (561)655-1151 • FAX (561)832-9390 •
WWW.ENGINEUTYGROUP.COM

DATE	05/23/2019
SCALE	1" = 50'
CAD FILE	17076.09
PROJECT	17076.09
DRAWN	J. RICE
CHECKED	J. MALIN

SHEET NO.	2/2
	JOB NO.
17076.09	